

Welcome



2	The Pride of Sydney
4	Think Tanks
6	Inspired Flexibility
8	Versatile and Functional
10	Greater Exposure
12	Seeing is Believing
14	Accommodation
16	LivingWell Premier Health Club

The Pride of Sydney

No detail has been spared, from our bath master and pillow menus, award-winning restaurant and bars to the world-class conference and meeting facilities. There is no decadence deemed too excessive to ensure your stay with us remains unforgettable.

Offering contemporary design coupled with state-of the-art facilities and a distinctive flair for culinary creativity - Hilton Sydney is a must whatever your business or pleasure.

Welcome to Hilton Sydney.

LEVEL 36
EXECUTIVE LOUNGE

LEVEL 42
MASTER SUITE

LEVEL 20 TO LEVEL 43
ACCOMMODATION ROOMS

Queen Victoria Building

GEORGE STREET

L4

L3

L2

L1

PITT STREET

Zeta bar

glass brasserie

Bridge

Lobby

Caffe Cino

Reception

Event Rooms

Exhibition Space

Grand Ballroom

Event Rooms

Business Centre

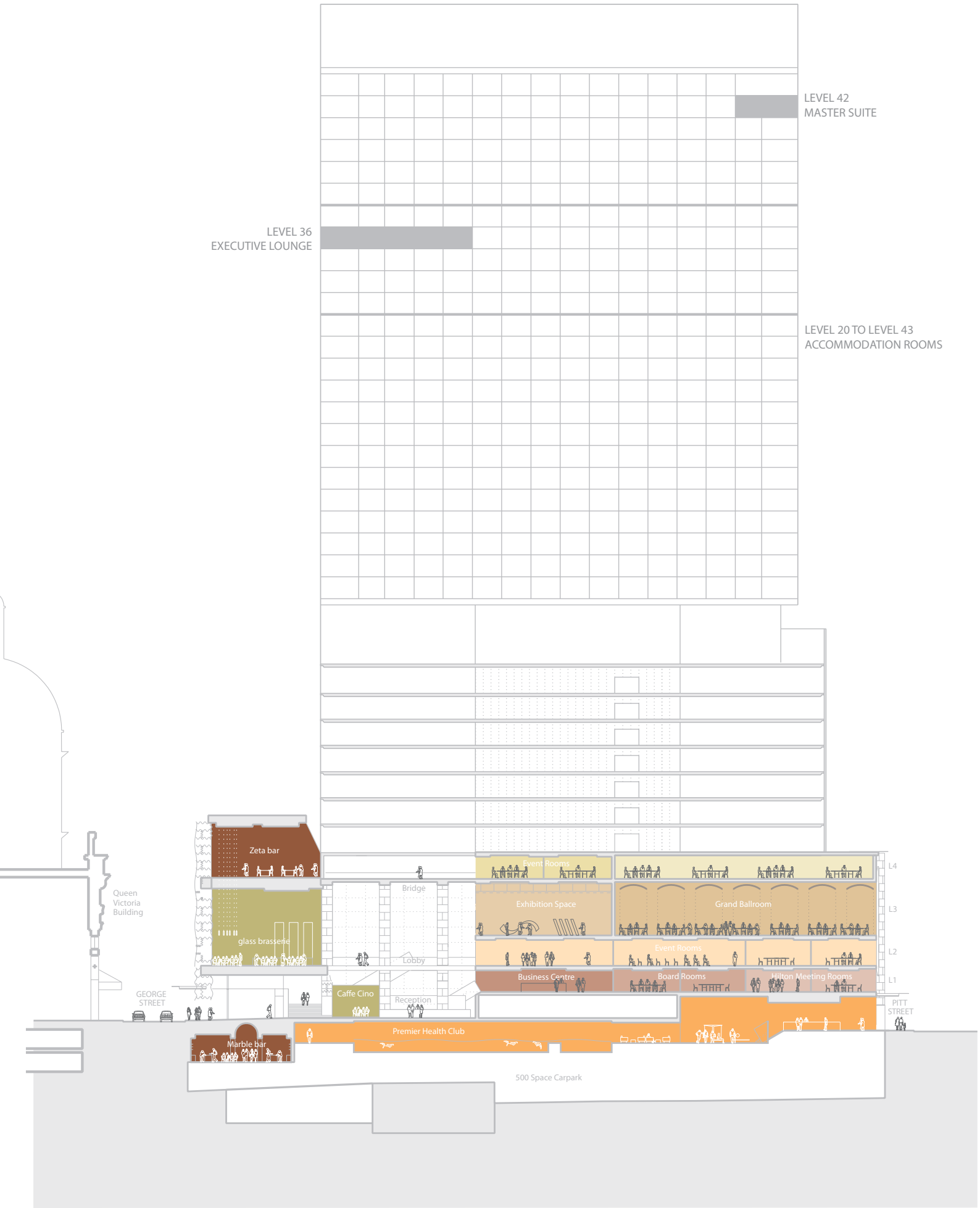
Board Rooms

Hilton Meeting Rooms

Marble bar

Premier Health Club

500 Space Carpark



Think Tanks



Our tailor made meeting rooms are designed to comfortably stimulate any creative thinking process – experience the famed *Hilton chair*.

Seven meeting rooms, two board rooms and a fully serviced business centre all dedicated on one floor, with your own exclusive Hilton Meetings Manager, will ensure there's a meeting room just right for you.

Capacities and dimension chart of Level 1

Level	Room	Theatre	Classroom	Boardroom	U-Shape	Cabaret	Dinner	Dinner/Dance
1	1	40	24	14	15	18	x	x
	2	48	24	14	15	18	x	x
	3	40	21	28	15	18	x	x
	4	42	21	28	15	18	x	x
	5	43	21	18	15	18	x	x
	6	50	30	24	21	18	x	x
	7	47	24	14	16	18	x	x
	3&4	80	40	34	29	30	x	x
	5&6	100	60	40	41	36	x	x

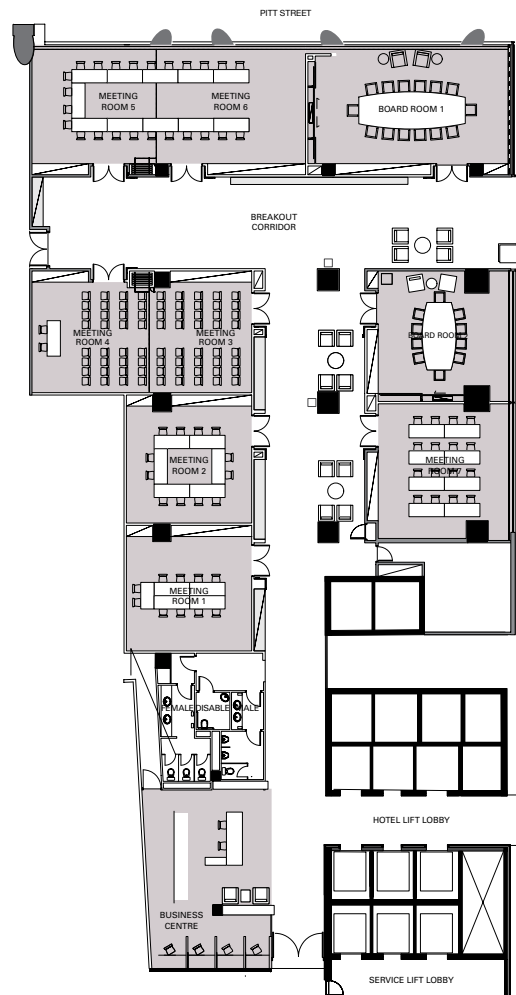
Maximum capacity shown, subject to event requirements.

Hilton Meetings at Hilton Sydney elevate meetings and other small corporate events, to an unrivalled level of personalized service. Flexibility combined with cutting edge technology offer tailored business solutions for your every and specific need.

An array of state-of-the-art facilities, such as high-tech audio-visual equipment and broadband / highspeed wi-fi internet access come standard with every room.

All have easy access to a fully serviced business centre and large pre-function area to compliment any function.

And choose from a range of catering options including the popular Healthy Meetings with fresh and exciting menus for your guests during breaks.







Inspired Flexibility



Hilton Sydney's Level 2 Meeting Rooms are perfect for small to medium sized presentations and corporate functions when making that impact counts.

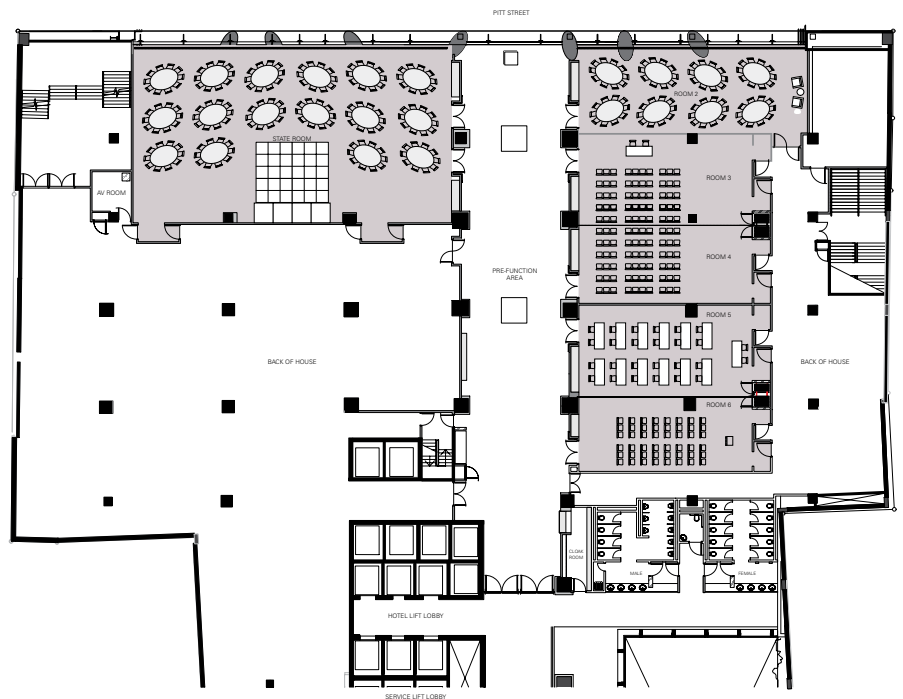
Five break-out rooms and a State Room, flooded with natural light and all accessible from a large pre-function area, make Level 2 a uniquely spacious and flexible venue, ideal for incentive groups and events.

Capacities and dimension chart of Level 2

								
Level	Room	Theatre	Classroom	Boardroom	U-Shape	Cabaret	Dinner	Dinner/Dance
2	State Room	390	200	66	66	200	250	200
	2	150	90	42	42	72	80	60
	3	82	42	30	24	40	60	40
	4	100	42	30	30	48	70	50
	5	100	42	30	30	48	70	50
	6	82	40	30	24	40	70	40
	3&4	160	80	x	x	64	100	80
	5&6	160	80	x	x	64	100	80

Maximum capacity shown, subject to event requirements.

This dedicated event floor features five side-by-side rooms - totaling over 480 sqm of space and capable of catering to over 500 guests. An all-encompassing, flexible State Room totalling over 320 sqm and expansive pre-function area complete the purpose designed space. With state-of-the-art facilities and personalized service, Level 2 will bring your meeting and event to new heights of exclusivity.



Versatile and Functional



With 4,000 sqm of hotel convention space over four dedicated floors, Hilton Sydney is Australia's largest hotel convention and meeting space. It is the only hotel where you can host a true convention from 300 to over 1,000 delegates all under one roof.

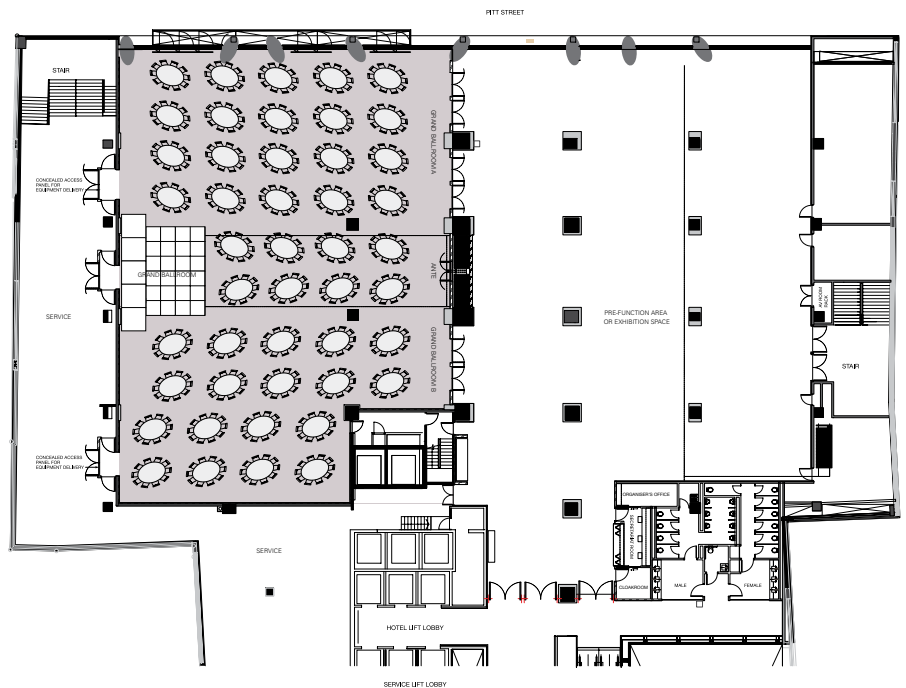
Capacities and dimension chart of Level 3

Level	Room	Theatre	Classroom	Boardroom	U-Shape	Cabaret	Dinner	Dinner/Dance
3	Grand Ballroom	1000	582	x	x	504	700	610
	Grand Ballroom A	420	255	x	x	216	250	x
	Grand Ballroom B	379	201	x	x	168	200	x
	Grand Ballroom A + Ante	685	345	x	x	280	370	x
	Grand Ballroom B + Ante	572	315	x	x	248	330	x

Maximum capacity shown, subject to event requirements.

At the heart of Hilton Sydney's convention and event centre is the Grand Ballroom; 6 metres high and offering 806 sqm of versatile convention space with natural light and capable of accommodating 1,000 seated guests. Plus the pre-function or exhibition space which can accommodate an additional 1,200 guests for a truly memorable cocktail reception.

Exclusively dedicated on Level 3, the conference and event centre is completely purpose built. A board of experts on conferencing and meetings assisted in the design of the hotel's functionality resulting in a space truly designed by the industry for the industry.



Greater Exposure



Saturated with an abundance of natural light and an open-air balcony, Level 4 allows delegates a fresher perspective and flexibility to exhibit or entertain whatever the size of their function.

Capacities and dimension chart of Level 4

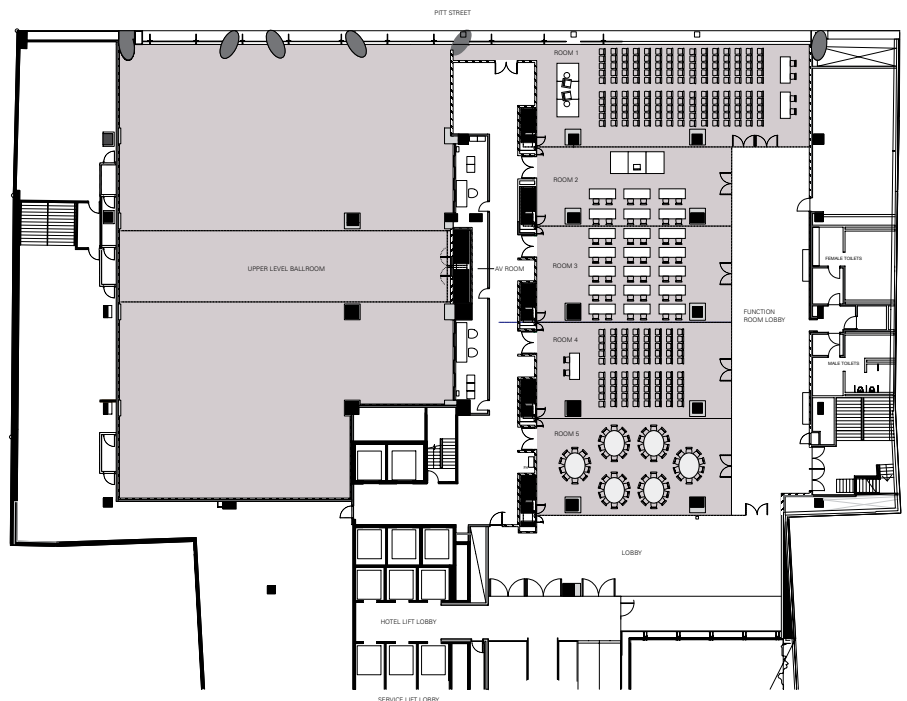
Level	Room	Theatre	Classroom	Boardroom	U-Shape	Cabaret	Dinner	Dinner/Dance
4	Total Floor	690	x	x	x	x	550	500
	1	180	80	50	54	80	100	x
	2	80	42	24	21	40	50	x
	3	100	60	30	30	48	60	x
	4	100	60	30	30	48	60	x
	5	100	60	30	30	48	60	x

Maximum capacity shown, subject to event requirements.

Situated directly above the Grand Ballroom is Level 4 offering a total floor space of 900sqm, with the ability to flexibly transform from a large open space for exhibitions and trade fairs, to five substantial function rooms ideal for cocktail parties and informal dinners.

Delegates will enjoy plenty of natural light; event room views over Sydney's busy street life; the most advanced audiovisual, sound and display technology; and authentic freshly prepared cuisine to suit delegates the world over.

With this unique conference and event centre, completely purpose built and at the heart of the city, Hilton Sydney is truly Australia's most inspiring convention and meeting space.



Seeing is Believing



From sumptuous contemporary dining to chic rooftop terraces, Hilton Sydney's private spaces are luxurious, inspiring and memorable - and each one is completely unique. Savour your experience.

**glass**

At once timelessly elegant and impressively lavish, glass showcases the exceptional culinary expertise of celebrated Chef / Restaurateur Luke Mangan.

Marble Bar

Built in 1893, this magnificent Victorian-style watering hole with original artwork is a favourite spot for Sydneysiders to enjoy live entertainment.

Zeta

The destination of choice for visiting celebrities, Zeta's iconic reputation as the city's sexiest bar is well deserved, with indulgent interiors and breathtaking views from the rooftop terrace.

To book

Booking your private space is simple and fast. Just call us on: (0)2 9265 6068 for glass or (0)2 9265 6026 for Marble Bar or Zeta.

glass

Marble Bar

zeta

Accommodation



Hilton Sydney redefines what it means to be a luxury hotel. You'll be transformed by the inspired thinking that has gone into all of our hotel rooms and suites. Warm, earthy tones feature in all Hilton guest rooms, then there's our much-talked about Relaxation Rooms and Suites representing the absolute zenith of indulgence.



Relaxation Rooms and Suites

These award-winning rooms are divided into three distinct spaces - one to work, one to relax and one to reinvigorate. Enjoy an ergonomic work station, a Hydro spa, three jet shower, plasma TV and of course the most comfortable bed in town.

Guest Plus and Deluxe Rooms

Hilton Sydney features 577 well-appointed accommodation rooms. Choose from King or Twin configuration and all rooms feature a work desk, high speed internet, LCD TV, safe and Crabtree & Evelyn amenities.

The Bath Master Experience

For the ultimate experience indulge in our exclusive Bath Master, where your bath will be prepared to the ideal temperature, filled with rejuvenating and relaxing herbal oils, amidst an ambience of candles, soft music and herbal teas.

Executive Lounge

Upgrade to the Executive Floor with access to the Executive Lounge including complimentary internet, evening drinks and canapes and a continental breakfast in the morning.

LivingWell Premier Health Club



Health Club

A haven to revive your body and balance your senses. The fully equipped LivingWell Premier Health Club spans the entire footprint of the hotel. The club includes a 25 metre indoor swimming pool, cardiovascular gym, two saunas, steam rooms and large spa pool. For the more aerobic inclined, there are two group fitness studios which run classes offering the full range of Les Mills body training, spinning, pilates and yoga. So whatever appeals, LivingWell is an essential part of the Hilton Sydney experience.

Day Spa

Enjoy a tranquil sanctuary in the heart of the city. Let time pass you by as you indulge and discover soothing, nurturing treatments and revitalising body massages designed to restore, rejuvenate or simply relax you.